

52/151

151

# REPLAT OF PARCEL I-4 AT BOCA WEST

A Part Of Boca West, Planned Unit Development

Lying In Section 9, Township 47 South, Range 42 East

Being A Re-Plat Of Parcel I-4 At Boca West, As Recorded In Plat Book 51, Pages 189 And 190, Public Records, Palm Beach County, Florida

December 1985

Sheet 2 of 2

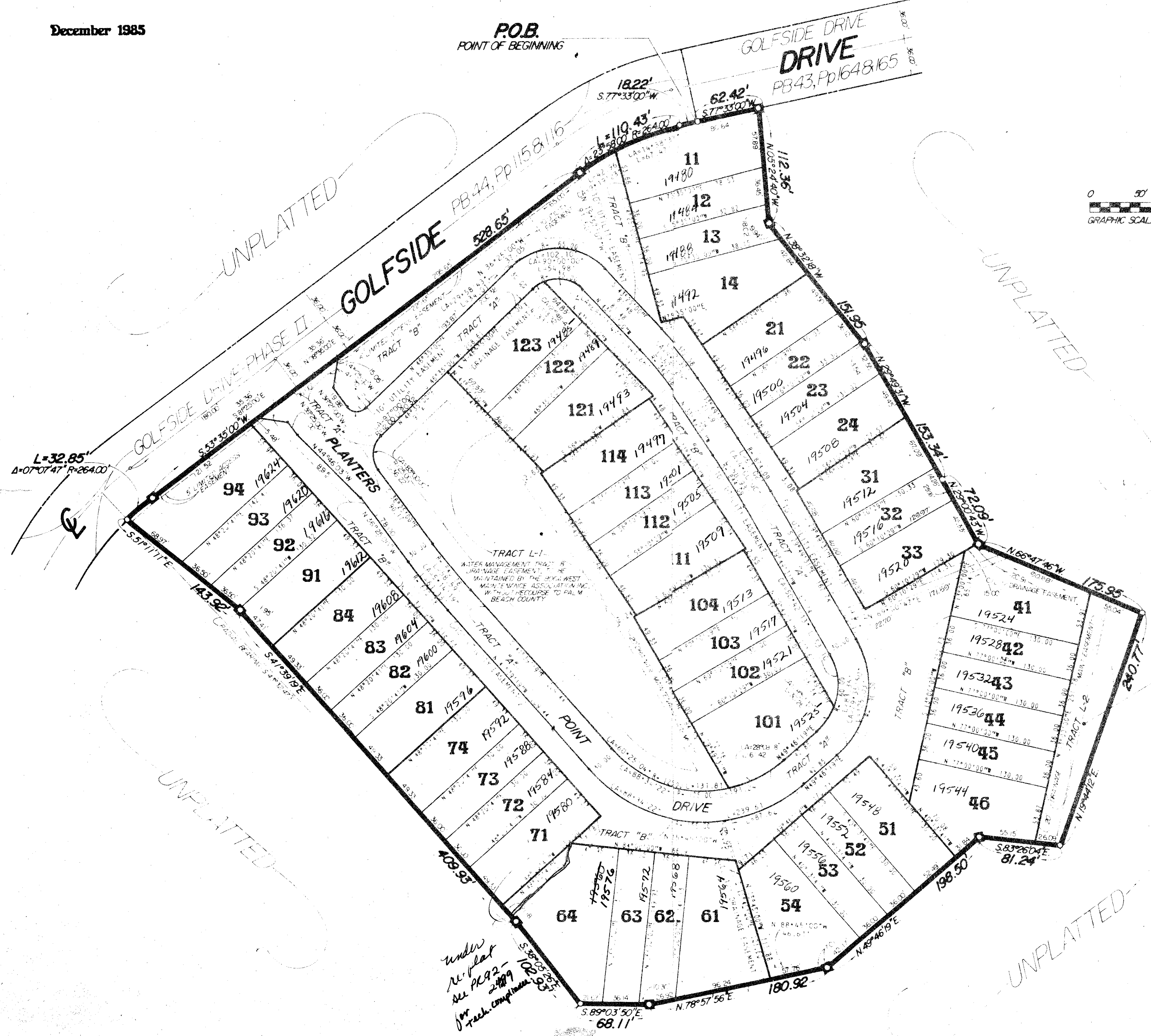
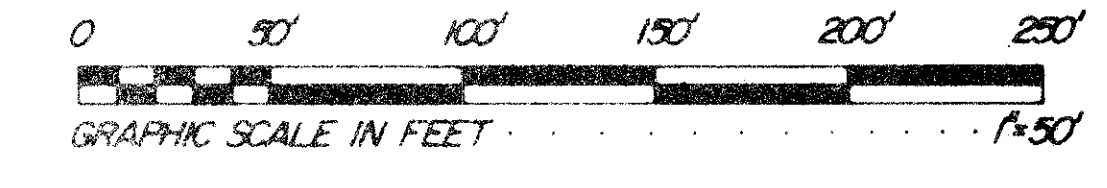
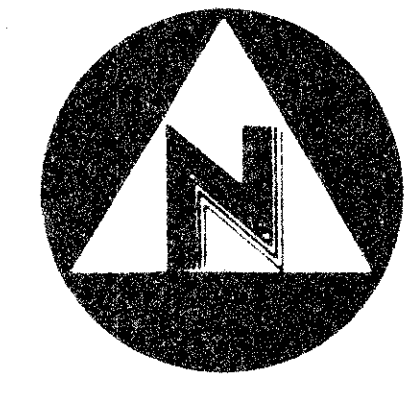
P.O.B.  
POINT OF BEGINNING

STATE OF FLORIDA )  
COUNTY OF PALM BEACH ) S.S.

THIS PLAT WAS FILED FOR RECORD  
AT \_\_\_\_\_ THIS \_\_\_\_\_ DAY  
OF \_\_\_\_\_, A.D., AND  
DULY RECORDED IN PLAT BOOK  
ON PAGES \_\_\_\_\_ AND \_\_\_\_\_

JOHN B. DUNKLE  
CLERK, CIRCUIT COURT

BY \_\_\_\_\_ DC



NOTE:  
THIS REPLAT IS BEING RECORDED FOR THE PURPOSE OF  
CORRECTING THE LOT NUMBERS ON THE PRIOR PLAT RECORDED  
IN PLAT BOOK 51, PAGES 189 AND 190, PUBLIC RECORDS, PALM BEACH  
COUNTY, FLORIDA.

WATER MANAGEMENT TRACT B DRAINAGE EASEMENT, TO BE  
MAINTAINED BY THE BOCA WEST MAINTENANCE ASSOCIATION, INC.,  
WITHOUT RECOURSE TO PALM BEACH COUNTY.

SUBDIVISION \* Boca West  
BOOK 52 PAGE 151  
FLOOD ZONE B FLOOD MAP # 23-0-B  
QUAD # 53  
PUD NAME Paul I-4

INDICATES SET PERMANENT REFERENCE MONUMENT

0214-011

9/17/42

0214-011

52/151

THIS INSTRUMENT WAS PREPARED BY WM R VAN CAMPEN, P.L.S. IN  
THE OFFICES OF BENCH MARK LAND SURVEYING AND MAPPING, INC.  
50 SOUTH MILITARY TRAIL, SUITE 200, WEST PALM BEACH, FL. 33415

RECORD PLAT

**BENCH MARK**  
land surveying and mapping, inc.

Re-Plat of  
Parcel I-4 At Boca West

DRAWING NUMBER

DRAWING NUMBER

DRAWING NUMBER

PLAN HOLD CORPORATION • IRVINE, CALIFORNIA  
RECORDED BY NUMBER 07548